

## CHAPTER 13

# STUDENT/CONSUMER SATISFACTION SURVEY HOLISTIC ENGLISH vs. TRADITIONAL ORAL ENGLISH

MARTIN WOLFF  
Sun Yat-sen University

### Sun Yat-sen University

Sun Yat-sen University is a first tier institution of higher education in China

Under the leadership of Dean XIA Jimei, PhD and Vice-Dean Wang Zhe, PhD, Sun Yat-sen University (Zhongshan), Guangzhou, a top tier university, arguably has one of China's most innovative, progressive and successful English teaching programs (TEFL), having received numerous national English teaching awards.

In the pursuit of English teaching excellence, commencing in March 2009, **Holistic English** has been taught to post-graduate non-English majors.<sup>i</sup> At the end of each semester the students/consumers are asked to answer an anonymous questionnaire indicating the amount of benefits they perceive to have received from the **Holistic English** program, ranking them from 1 – 10, with ten being the most beneficial. The areas of perceived benefits are:

#### Chart 1

Vocabulary  
Reading  
Oral  
Writing  
Listening

#### Chart 2

Motivation  
Self-Discipline  
Confidence  
Creative Thinking  
Autonomous Learning Skills

#### Chart 3

World View

The students' questionnaire answers were then tabulated and depicted in graph form. The graphs in the following **right hand column** summarize the **Holistic English students'**<sup>ii</sup> perceived benefits. (600 students for the spring 2009 term, 625 students for the fall 2009 term and 650 students for the spring 2010 term.) *See graphs B, D, H, J, L, N, P, R T and X.*

The Department of English Teaching administration selected a group of 3 classes for the March 2009 semester; 4 classes for the September 2009 semester<sup>iii</sup> and \_\_\_\_ classes for the March 2010 semester, to use for comparison of students' perceived benefits. The control group classes of post-graduate non-English majors were taught a traditional oral English program, by some of the Department's best Chinese teachers. At the end of each semester the students/consumers in the control group were also asked to answer the same questionnaire as answered by the Holistic English students. The students' questionnaire answers were then tabulated and depicted in graph form. The graphs in the following **left hand column** summarize the **control group students'** perceived benefits. (129 students for the spring 2009 term, 172

students for the fall 2009 term and \_\_\_\_ students for the spring 2010 term.) See graphs A, C, G, I, K, O, Q, S and W.

In the spring 2009 semester 10% of the students in the control group filled out the questionnaire in Chinese instead of English.

In the fall 2009 semester 14.5% of the students in the control group failed to follow the simple written English instructions causing numerous Questionnaires to be invalidated.

- Class 22 - 6 Questionnaires invalid
- Class 23 - 1 Questionnaire invalid
- Class 24 - 6 Questionnaires invalid
- Class 26 - 12 Questionnaires invalid

## SUMMARY

The control class cumulative charts reflect that in the traditional oral English programs there is a degree of chaos, uncertainty and lack of a delivery system that produces consistent and reliable results over a broad diversity of students. The percentage of dissatisfied students/consumers is very high and the degree of satisfaction by the satisfied students/consumers is low.

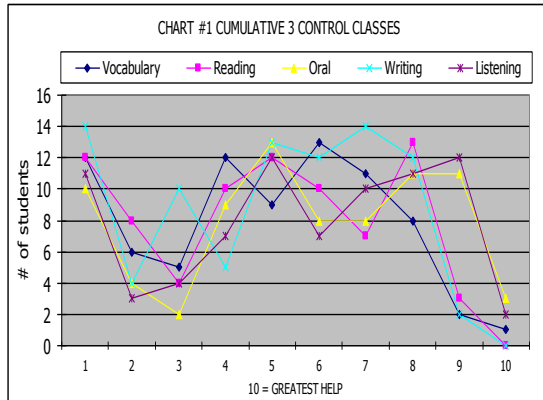
The Holistic English program charts reflect the consistent delivery of an educational product that produces uniform results to highly satisfied students/consumers.

All of the SYSU students' questionnaire responses have been delivered to the Department of English Teaching administration for verification of this report.



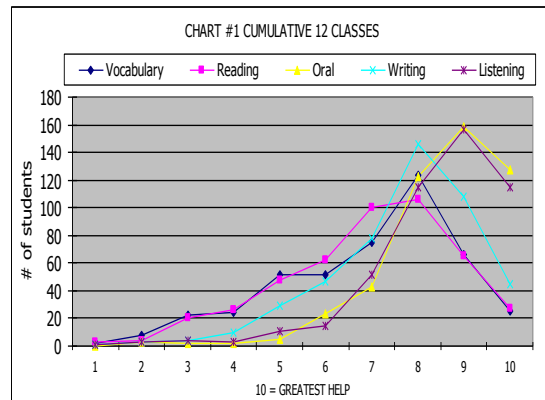
**Christmas 2009 Holistic English Lan SYSU**

**C G (3 Classes) MARCH 2009** SYSU



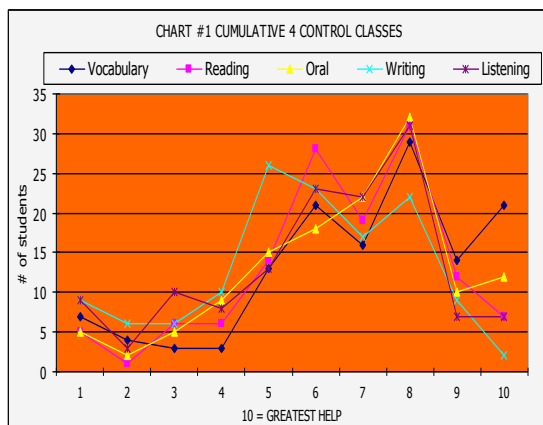
A

**H E (12 Classes) MARCH 2009** SYSU



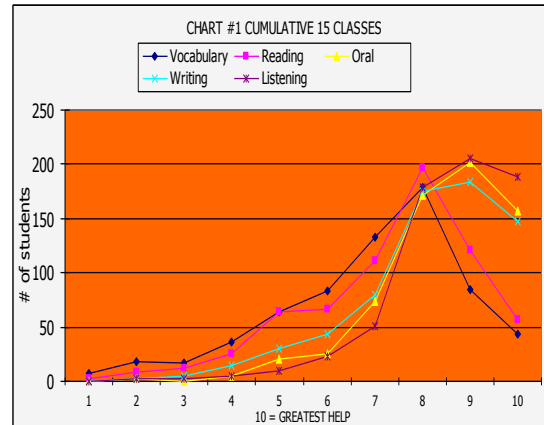
B

**C G (4 Classes) SEPT 2009** SYSU



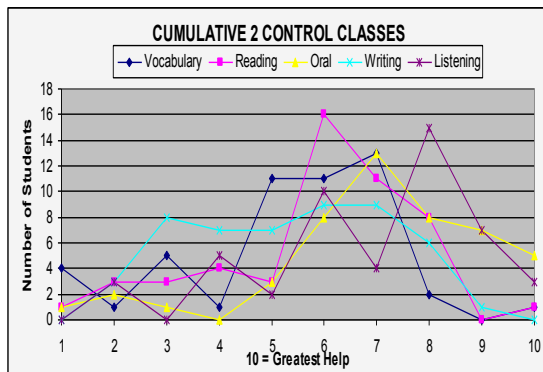
C

**H E (15 Classes) SEPT 2009** SYSU



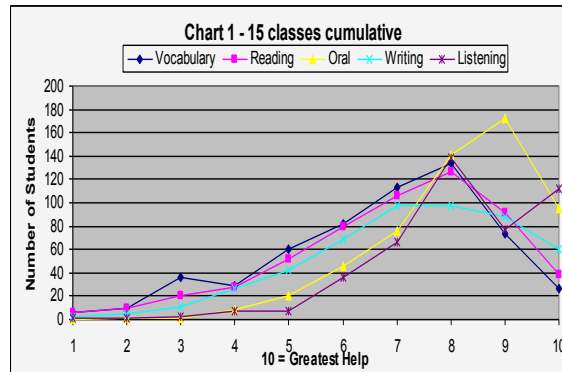
D

**C G (3 Classes) MARCH 2010** SYSU



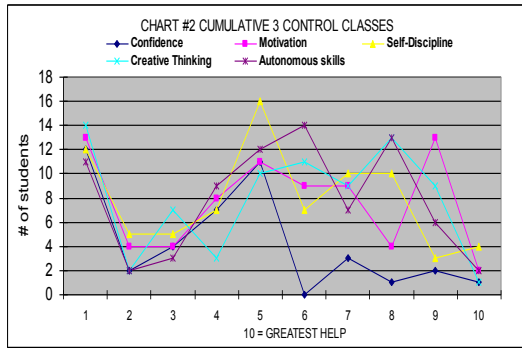
E

**H E (15 Classes) MARCH 2010** SYSU



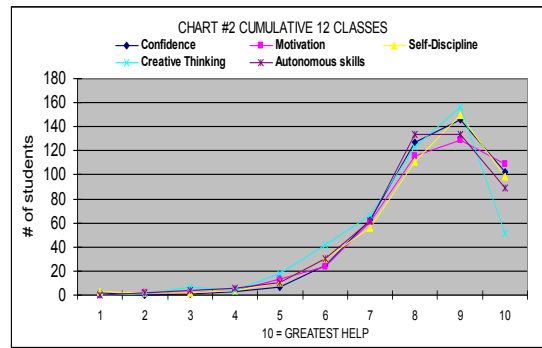
F

**C G (3 Classes) MARCH 2009** SYSU



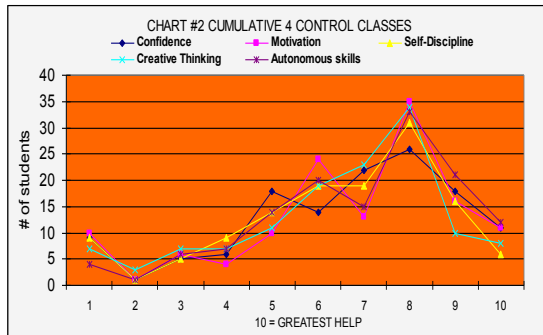
G

**H E (12 Classes) MARCH 2009** SYSU



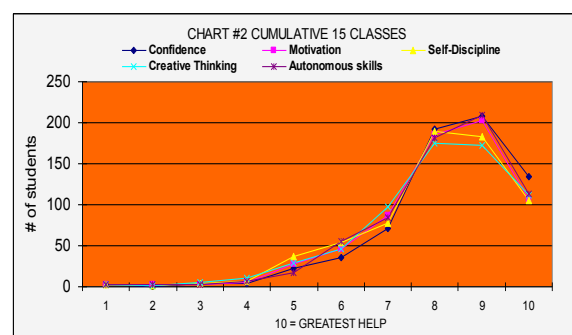
H

**C G (4 Classes) SEPT 2009** SYSU



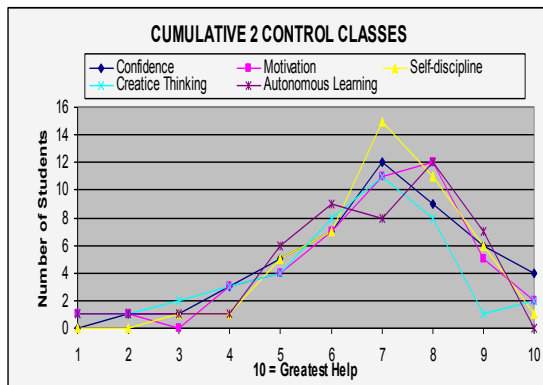
I

**H E (15 Classes) SEPT 2009** SYSU



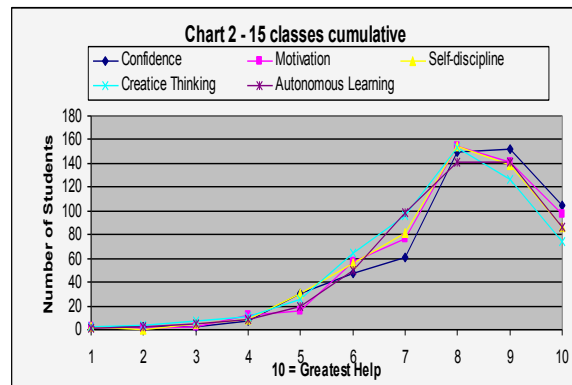
J

**C G (2 Classes) MARCH 2010** SYSU



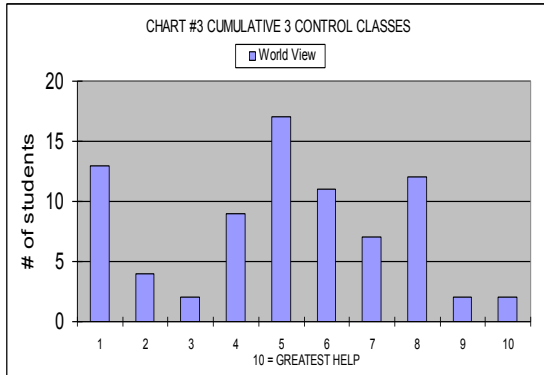
K

**H E (15 Classes) MARCH 2010** SYSU



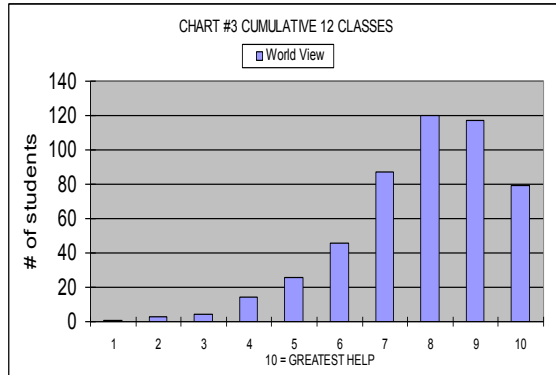
L

**C G (3 Classes) MARCH 2009 SYSU**



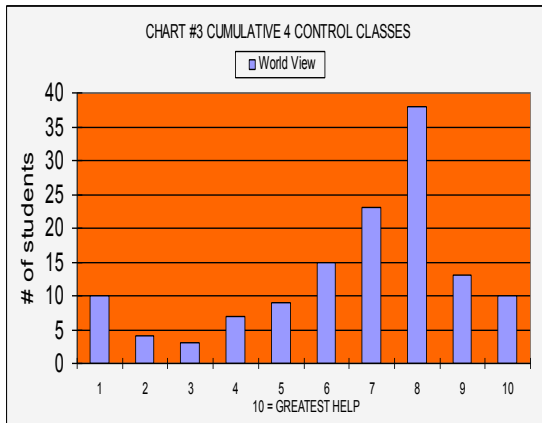
M

**H E (12 Classes) MARCH 2009 SYSU**



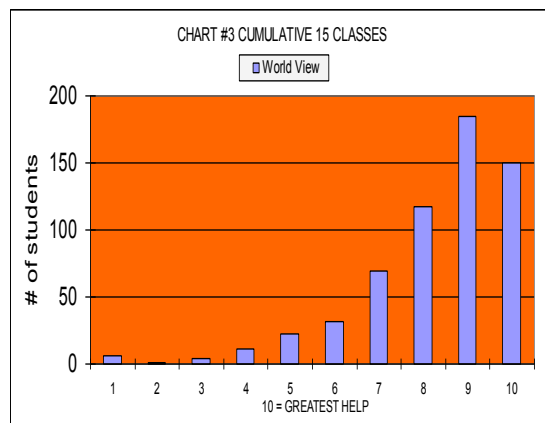
N

**C G (4 Classes) SEPT 2009 SYSU**



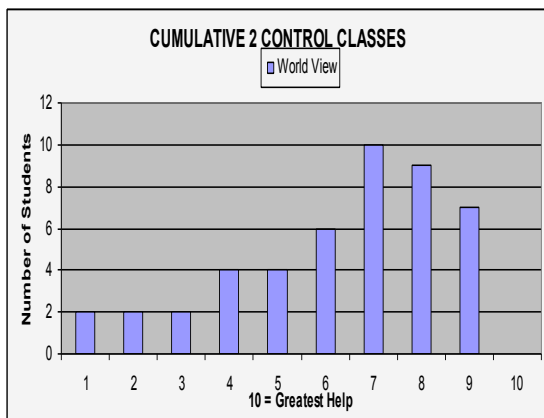
O

**H E (15 Classes) SEPT 2009 SYSU**



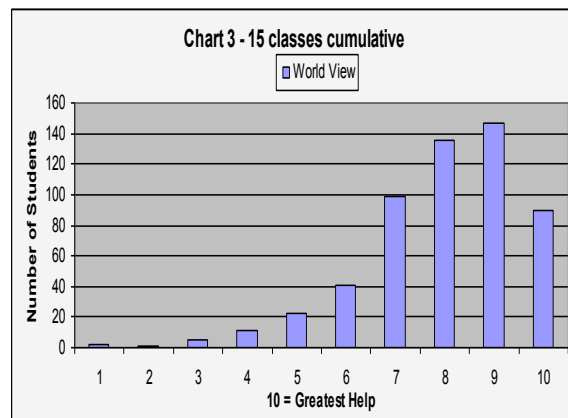
P

**C G (2 Classes) MARCH 2010 SYSU**



Q

**H E (15 Classes) MARCH 2010 SYSU**



R

## **CONCLUSION**

2,200 post-graduate non-English major students/consumers, representing every province representing 396 undergraduate intuitions of higher education, have spoken.

In their collective opinion, the Holistic English Program consistently delivers a superior educational product that produces a significantly higher degree of student/consumer satisfaction.

You can please some of the students/consumers all of the time and all of the students/consumers some of the time, but you can't please all of the students/consumers all of the time. Holistic English is no different. However, with the Holistic English 2<sup>nd</sup> language acquisition program you can please more of the students/consumers, more of the time, with a higher degree of satisfaction, than with the traditional oral English learning curriculum.

English is not something you learn in a 2 hour classroom every other week. English must be lived 24/7. You must eat, sleep, drink and even dream in English.

The end of term anonymous questionnaire also asks the students to express what was best and what was worst about the Holistic English class. For three consecutive semesters at Sun Yat-sen University there was a consistent thought, to paraphrase:

What we like the best about the Holistic English class is that we have the environment and encouragement where we can speak Chinglish without condemnation and that allows us to build our self-confidence which increases our intrinsic motivation and we speak more.

The worst thing about the Holistic English class is that the teaching period is not long enough, the class does not meet often enough and it only lasts one semester. Imagine, Chinese college students complaining that they are not getting enough time in a course.

The Control Class students' questionnaire responses overwhelmingly stated that their traditional English course was boring, not interesting, lasted too many hours and students are not given enough opportunity to speak.

## **WHAT SYSU STUDENTS ARE SAYING**

When the students/consumers have completed the Holistic English program and their final grades have been submitted, they are afforded an opportunity to post their comments about the program at <http://chinaholisticenglish.com> The following are some representative examples of what the students of the Fall 2009 term are saying about Holistic English.

### **Katherine Class4**

December 30th, 2009 at 3:39 pm ·

The class is over, but learning English just begins. I just want to say, from the bottom of my heart, thank you. From the class I learned how to learn English well, read more, listen more, and speak more. Now I do learn English more in my free time, and I know many difficulties lay ahead, but I will continue to learn English—even in the toughest times. The journey of learning English will go on!

### **Robert-Class16**

December 30th, 2009 at 9:19 pm

In HE we can learn, talk and speak freely. There are no right answers or wrong answers. And we can discuss with others. This class model helps my oral English a lot. I love this class!

### **Eric class4**

December 30th, 2009 at 9:36 pm

After finishing your class, I found that I made some progress! The most important thing is that you taught me how to continue to learn English even after finishing the class. Finally, I must say thank you to you!

### **Maggie class5**

December 30th, 2009 at 11:40 pm

I thank you for giving me a very different kind of English class, which make me very impressed. For I had never written, listened and spoken as much English as this semester done before. As a result, I make progress in learning English. What's more, I learned knowledge of economy by watching movies which makes me so excited. So I thank you sincerely.

### **Maxwell.5**

December 31st, 2009 at 3:21 pm

I never did it like this semester to study English. HOLISTIC ENGLISH have impressed me deeply, I will never forget it. I am really moved a step on my English learning road, really improved not only in my oral English, but also in my confidence. A wonderful class and an excellent teacher, Thank you very much!

### **Sunny Class Three**

January 4th, 2010 at 4:17 pm

I cannot believe that this class has come to end. No more Emails from ..., no more homework we should do in the future. I have to admit that this class is the most impressive, interesting and helpful English class. And it is not only an English lesson. We get to other knowledge beyond our major, think more and deeper about the world, our country, and our future, ourselves... We begin to talk with others confidently in Chinglish, no

matter what other people is thinking of. Steel sharpens steel. We believe that firmly and we will do so. I am so lucky to take Holistic English...

### **Gloria Class 8**

January 4th, 2010 at 5:19 pm

The Holistic English experience is very unforgettable and valuable for me. After ten years of English learning, I have got more from this than ever. This class not only taught me English-learning experience but also analytical perspective and so on. I can't express my gratitude for this class in words especially the founder, our professor.

### **joe Class 2c**

Submitted on 2010/05/11 at 12:28am SYSU

Professor Martin is leaving, and I don't know the reason why. I admit that I didn't read much and neither of my comments on this website. But I feel my English has improved a lot this semester, so I thank him and I will miss him. Wishing him a good trip around this country and the world. He really had done a very wonderful great work.

Listening to the voices of the students/consumers is in vogue. Asking students' opinions about school may be trendy, but integrating their views must be a part of educational policy development.

---

i Spring 2009

The students represent the following provinces:

Anhui, Chongqing, Fujian, Gansu, Guangdong, Guangxi, Guizhou, Hainan, Heilongjiang, Henan, Hubei, Hunan, Inner Mongolia, Jiangsu, Jiangxi, Jilin, Liaoning, Ningxia, Shanxi, Shandong, Sichuan, Xinjiang Uyghur Autonomous Region, Yunnan, Zhejiang

The students represent the following 120 undergraduate institutions of higher learning:

Anhui University, Anyang Normal University, Army Institute of Xian, Beijing Institute of Business, Beijing Normal University, Central China Normal University, Central University of Finance and Economics, Central South University, Central University of Nationalities, Chang An University, Changchun University, Changchun Normal University, Changchun Taxation College, China University of Mining and Technology, Chin South Normal University, Chinese University of Political Science and Law, Chongqing University, Chongqing Jiaotong University, Chongqing University of Posts and Telecommunications, Dalian Nationalities University, DongBei University of Finance and Economics, Finance and Economic University of Tiang Yi, Fudan University, Fujian Normal University, Fuzhou University, Gannan Normal University, Guangxi University, Guangdong Academy of Fine Art, Guangdong Business University, Guangdong Polytechnic Normal University, Guangdong University of Business Study, Guangdong University of Foreign Studies, Guilin University of Electronic Technology, Guizhou Institute of Nationalities, Guizhou Normal University, Guizhou University, Hangzhou Dianzi University, Hainan University, Harbin University of Science and Technology, Henan Agricultural University, Hebei Normal University, Hebei Economic and Business University, Hebei University, Hefei University of Technology, Henyang Normal University, Hohai University, Hongshan Normal University, Huazhong Agricultural University, Huazhong University of Science and Technology, Hubei Coal Industrial Teacher's College, Hubei University of Technology, Hubei University, Hunan University of Arts and Sciences, Hunan University, Hunan Normal University, Jiaying University, Jiangxi Normal University, Jiangxi University of Finance and Economics, Jilin University, Jishou University, Kunming University of Science and Technology, Lanzhou Commercial College, Lanzhou University, Liaoning University, Ludong University, Minzu University, Nanjing Agriculture University, Nanchang University, Nanjing University, Nanjing University of Finance and Economics, Nankai University, Nanyang Institute College, Nanyang Normal University,

---

NorthEast Agricultural University, NorthEast Normal University, North China Electric Power University, Northeastern University, Northwest University of Politics and Law, Northwest University, Northwest Polytechnic University, Peking University, People's University of China, Qingdao University, Renmin University, Shandong University, Shanxi Normal University, Shanxi University, Shenzhen University, Sichuan Normal University, Sichuan University, South Central University for Nationalities, Sijiazhuang Railway College, South China Agriculture University, South China Normal University, South China University of Technology, South China University, Southwest JiaoTong University, Southwest Finance University, Southwest University, Southwest University of Finance and Economics, Southwest University of Political Science and Law, South China University of Technology, Sun Yat-sen, Tianjin Normal University, Tianjin Foreign Studies University, Tianjin University of Science and Technology, Tsinghua University, University of Science and Technology of China, Wuhan Institute of Technology, Wuhan University, Xian Economic and Financial College, Xian Jiaotong University, Xian Institute of Technology, Xian University of Finance and Economics, XiangTan University, Xiamen University, XiDian University, YanShan University, Yantai University, Yunnan University, Zhanguan Economy and Law School, Zhanjiang Normal University, Zhengzhou University, Zhejiang University, Zhejiang University of Technology, Zhongnan University of Economics and Law, Zhongshan University

#### Fall 2009

The students represent the following provinces:

Anhui, Chongqing, Fujian, Guangdong, Gansu, Guangxi, Guizhou, Hebei, Heilongjiang, Henan Hong Kong (SAR), Hubei, Hunan, Inner Mongolia, Jiangsu, Jiangxi, Jilin, Liaoning, Ningxia, Shanghai, Shandong, Shanxi, Shaanxi, Sichuan, Tianjin, Xinjiang, Yunnan, Zhejia

The students represent the following 195 undergraduate institutions of higher learning:

Agricultural University of Hebei, Anhui Normal University, Anhui University, Anyang Normal University, Anyang Normal Teachers University, Beijing Normal University, Beijing Normal University Zuhai Campus, Binzhou University, Central China Agriculture University, Central China Normal University, Central South University of Forestry and Technology, Central South University, Changchun Normal University, Changsha University, Changsha University of Science and Technology, Chengdu University of Technology, China Agriculture University, China Pharmaceutical University, China University of Geosciences, China West Normal University, Chongqing Normal University, Chongqing Technology and Business University, Chongqing University of Post and Telecommunications, Dalian University of Technology Dalian Jiaotong University, Daqing Petroleum Institute, Dezhou University, East China Institute of Technology, East China Normal University, East China Institute of Technology, Foshan University, Fujian Normal University, Gannan Normal University, Guangdong College of Pharmacy, Guangdong Ocean University, Guangzhou University, Guangdong University of Technology, Guangdong University of Business Study Guangdong University of Technology, Guangzhou University of Chinese Medicine, Guangdong University of Technology, Guangxi Normal University, Guilin University of Technology, Guiyang College of Traditional Chinese Medicine, Guizhou University, Guizhou College of Finance and Economics, Hainan Normal University, Hainan University, Harbin Engineering University, Harbin Normal University, Hebei University of Science and Technology, Hebei Normal University, Hefei University, Hefei University of Technology, Heilongjiang University, Henan Institute of Science and Technology, Henan Normal University, Henan University, Henan College Of Science And Technology, Henan University of Technology, Hengyang Normal University, Hohai University, Huaibei Coal Industry Teachers College, Huanggang Normal University, Huangshan College, Huangshan University, Huazhong Agricultural University, Huazhong Normal University, Huangzhong Agricultural University, Hubei Normal University, Hubei University of Technology, Hunan Agriculture University, Hunan City University, Hunan Normal University, Hunan University of Arts and Science, Hunan University of Chinese Medicine, Hunan University, Hunan University of Science and Technology, Hunan University, Inner Mongolia University, Jiangxi Agricultural University, Jiangxi Normal University, Jiangxi Science & Technology Normal University, Jiangsu University, Jiaying University, Jiamusi University, Jiliang University, Jilin University, Jimei University, Jinan University, Jiujiang University, Jishou University, JYU University, Liaoning Normal University, Liaoning University, Lanzhou University, Leshan Normal University, Liaocheng University, Liaoningshivua University, Linyi Normal University, Linyi University, Luoyang Normal University, Nanchang University, Nanchang Hang Kong University, Nanjing Agricultural University, Nanjing Normal University, Nanjing University, Neijiang Teachers' College, Nankai University, Northeast Agriculture University, Northeast Forest University, Northeast Normal University, Northeastern University, North University of China, North West Normal University, Northwest University, Northwest University of Politics and Law, Northwest A & F University, Ocean University of China, Peking University, Pingdingshan University, Quanzhou Normal University, Qingdao Agricultural University, Qingdao University, Qingdao Technological University, Qufu Normal University, Qiannan Normal College for Nationalities, Shanxi Agriculture University, Shanxi Datong University, Shaanxi Normal University, Shandong Agricultural University, Shandong Normal University, Shandong University of Technology, Shandong University of Science and Technology, Shandong University, Shaoyang University, Shaoyang College, Shangqiu Normal University, Shanxi Datong University, Shanxi Normal University, Shanxi University, Shenyang Agricultural University, Shenyang Pharmaceutical University, Shenzhen University, Shijiazhuang University Of Economics, Sichuan Agricultural University, Sichuan Normal University, South Central University for Nationalities, South China Agriculture University, South China Normal University, South China University of Technology, Southeast University, Southwest Forestry College, Southwest Jiaotong University, Southwest Normal University,

---

Southwest University for Nationalities, Southwest University of Science and Technology, Sun Yat-sen University, Taiyuan Normal University, The Chinese University of Hong Kong, Three Gorges University, Tianjin University of Technology, Tianjin Normal University, University of Electronic Science and Technology of China, University of Jinan, University of South China, Weifang Medical College, Weinan Normal University, Wenzhou University, Wuhan University, Wuhan University of Technology, Xiangnan University, Xiangtan University, Xi'an Jiaotong University, Xidian University, Xinzhou Teachers University, Xinjiang University, Xinyang Normal University, Xuchang University, Yangcheng Normal University, Yanshan University, Yantai University, Yantai Normal University, Yangtze University, Yunnan University, Yuxi Normal University, Zhangzhou Normal University, Zhejiang University, Zhejiang Chinese Medical University, Zhejiang Forestry University, Zhengzhou Normal University, Zhengzhou University, Zunyi Medical College

#### SPRING 2010

The students represent the following provinces:

Anhui, Chongqing, Fujian, Gansu, Guangdong, Guangxi, Guizhou, Hebei, Heilongjiang, Henan, Hubei, Hunan, Inner Mongolia, Jiangsu, Jiangxi, Jilin, Liaoning, Ningxia, Qinghai, Shaanxi, Shandong, Shanxi, Sichuan, Tianjin, Xinjiang, Yunnan, Zhejiang

The students represent the following 191 undergraduate institutions of higher learning:

Anhui University, Anhui University of Technology, Anhui University, Anyang Normal University, Baoji University of Arts and Sciences, Beijing Forestry University, Beijing Institute of Technology, Beijing Jiaotong University, Beijing Minzu University of China, Beijing Normal University, Capital Normal University, Central South University, Central South University of Forestry and Technology, Centre China Normal University, Chang'an University, Changsha University, Changsha University of Science & Technology, Chengdu University of Information Technology, China University of Geosciences, China University of Mining and Technology, China Women's University, Chongqing Jiao Tong University, Chongqing Normal University, Chongqing Southwest University, Chongqing Technology and Business University, Chongqing Three Gorges University, Chongqing University, Chongqing University of Posts & Telecommunications, Chongqing University of Technology, Dalian Nationalities University, Dezhou University, Dongguan University of Technology, Fudan University, Fuzhou University, Gannan Normal University, Guangdong Education Institution, Guangdong University of Business Studies, Guangdong University of Finance, Guangdong University of Foreign Study, Guangdong University of Technology, Guangzhou University, Guangxi Normal University, Guangxi University, Guangxi University for Nationalities, Guizhou College of Economy and Finance, Hainan Normal University, Hainan University, Hanshan Normal University, Harbin Engineering University, Harbin Normal University, Hebei Agriculture University, Hefei University of Technology, Heilongjiang University, Henan Normal University, Henan University, Henan University of Finance and Economics, Hengyang Normal University, Hubei Normal University, Huaqiao University, Huaqiao University in Fujian province, Huazhong University of Science and Technology, Hubei Changjiang University, Hubei National University, Hubei University, Hunan Institute of Science and Technology, Hunan Normal University, Hunan University, Hunan University of Arts and Science, Hunan University of Science and Engineering, Hunan University of Science and Technology, Inner Mongolia Autonomous Region, Inner Mongolia Normal University, Inner Mongolia University, Jiangnan University, Jiangxi Normal University, Jiangxi University of Finance and Economics, Jiaying University, Jilin University, Jinggangshan University, Jishou University, Lanzhou University, Liaocheng University, Linyi Normal University, Mianyang Normal University, Minzu University of China, Nanchang Hangkong University, Nanchang University, Nanjing Normal University, Nanjing University, Nanjing University of Aeronautics and Astronautics, Nanjing University of Finance & Economics, Nanjing Agricultural University, Nanjing Audit University, Nankai University, Naval Aeronautical Engineering Academy Qingdao Branch, Normal University, Northeast University, Northeast Normal University, Northwest A&F University, Northwest Nationalities University, Northwest Sci-Tech University of Agriculture and Forestry, Northwest University, Northwest University for Nationalities, Pingdingshan University, Qinghai University, Qufu Normal University, Shaanxi Normal University, Shandong Economic University, Shandong Institute of Business and Technology, Shandong Institute of Light Industry, Shandong Jianzhu University, Shandong Liaocheng University, Shandong Normal University, Shandong University, Shandong University, South-central University for Nationalities, Shanxi North University of China, Shanxi University, Shanxi University of Finance and Economics, Shijiazhuang Railway Institute, Sichuan International Studies University, Sichuan Normal University, Sichuan University, South-Central University for Nationalities, South China Agricultural University, South China Normal University, South China University of Technology, Southern Medical University, Southwest University, Southwest University of Finance and Economics, Southwest University of Political Science and Law, Sun Yat-sen University, Tangshan Normal University, Tianjin Foreign Study University, University of Electronic Science and Technology of China, University of Science and Technology Beijing, Wuhan Institute of Technology University, Wuhan Polytechnic University, Wuhan University, Wuhan University of Technology, Xi'an International Studies University, Xiamen University, Xi'an Jiaotong University, Xi'an Post and Telecommunication University, Xi'an University of Electronic Science and Technology, Xiangtan University, Xidian University, Xinjiang University, Yanshan University, Yulin Normal University, Yunnan Normal University, Yunnan University, Zhejiang Gongshang

---

University, Zhejiang University of Finance and Economics, Zhengzhou Institute of Aeronautical Industry Management, Zhengzhou University, Zhongnan University of Economics and Law, Zhongyuan University of Technology, Zhoukou Normal University, Zunyi Normal College

ii Holistic English Classes March 2009

Class #1 Economics  
Class #2 Economics, Finance, Marketing  
Class #5 E Business, Economics, Management Science  
Class #6 History  
Class #7 Chinese Studies  
Class #8 Chinese Studies  
Class #11 Law  
Class #12 Law  
Class #13 Accounting, Finance, Management Science  
Class #14 Accounting, Business Administration, E Commerce, HRM  
Class #17 Information Management, Marketing  
Class #18 Economics, medical Informatics  
Class #21 International Relations, Political Science, Sociology  
Class #22 Demography, Public Administration, Sociology

HOLISTIC ENGLISH CLASSES September 2009

Class #1 School of Life Sciences  
Class #2 School of Life Sciences  
Class #3 School of Life Sciences  
Class #4 School of Life Sciences  
Class #5 School of Life Sciences, School of Education  
Class #6 School of Environmental Science, and Engineering  
Class #7 School of Geography and Planning  
Class #8 School of Geography and Planning  
Class #9 School of Geography and Planning  
Class #13 School of Mathematics and Computational Science  
Class #14 School of Mathematics and Computational Science; Department of Earth Science  
Class #15 Department of Earth Science  
Class #16 School of Chemistry and Chemical Engineering  
Class #17 School of Chemistry and Chemical Engineering  
Class #18 School of Chemistry and Chemical Engineering

HOLISTIC ENGLISH CLASSES MARCH 2010

Class #1 Lingnan College  
Class #2 Lingnan College  
Class #3 Lingnan College  
Class #4 Lingnan College  
Class #5 Lingnan College  
Class #6 Research Center of Hong Kong and Macau  
Class #7 School of History  
Class #8 School of Chinese Language and Literature  
Class #9 School of Chinese Language and Literature

---

Class #10 School of Chinese Language and Literature  
Class #11 School of Education  
Class #12 School of Education, School of Management  
Class #13 School of Sociology and Anthropology  
Class #14 School of Sociology and Anthropology  
Class #15 School of Philosophy  
Class #16 School of Philosophy, School of Tourism, School of Asia-Pacific

iii CONTROL GROUP March 2009

Class #20 Philosophy  
Class #23 Political Science  
Class #24 Journalism, Tourism, and International Communications

CONTROL GROUP September 2009

Class #22 School of Life Science  
Class #23 School of Environmental Science and Engineering  
Class #24 School of Environmental Science and Engineering  
Class #26 School of Information Science and Technology

Control Group March 2010

Class #18  
Class #19

## **396 Undergraduate schools represented**

Agricultural University of Hebei, Anhui Normal University, Anhui University, Anhui University of Technology, Anyang Normal University, Anyang Normal Teachers University, Army Institute of Xian,

Baoji University of Arts and Sciences, Beijing Normal University Zuhai Campus, Beijing Normal University, Beijing Forestry University, Beijing Institute of Business, Beijing Institute of Technology, Beijing Jiaotong University, Beijing Minzu University of China Binzhou University,

Captial Normal University, Central South University, Central South University of Forestry and Technology, Central China Agriculture University, Central China Normal University, Central South University of Forestry and Technology, Central South University, Central University of Finance and Economics, Central University of Nationalities, Changchun Normal University, Chang'an University, Changsha University, Changsha University of Science & Technology, Chengdu University of Information Technology, , Chengdu University of Technology, China Agriculture University, China Pharmaceutical University, China University of Geosciences, China West Normal University China University of Geosciences, China University of Mining and Technology, China Women's University, Chongqing Jiao Tong University, Chongqing Normal University, Chongqing Southwest University, Chongqing Technology and Business University, Chongqing Three Gorges University, Chongqing University, Chongqing University of Posts & Telecommunications, Chongqing University of

---

Technology, Chang An University, Changchun University, Changchun Normal University, Changchun Taxation College, China University of Mining and Technology, Chin South Normal University, Chinese University of Political Science and Law, Chongqing University, Chongqing Jiaotong University, Chongqing University of Posts and Telecommunications,

Dalian Jiaotong University, Dalian Nationalities University, Dalian University of Technology, Daqing Petroleum Institute, DongBei University of Finance and Economics, Dezhou University, Dongguan University of Technology

East China Institute of Technology, East China Normal University, East China Institute of Technology

Finance and Economic University of Tiang Yi, Foshan University, Fujian Normal University, Fudan University, Fujian Normal University, Fuzhou University, ,

Gannan Normal University, Guangdong Education Institution, Guangdong University of Finance, Guangdong University of Foreign Study, Guangdong University of Technology, Guangzhou University, Guangxi Normal University, Guangxi University for Nationalities, Guangxi University, Guangdong Academy of Fine Art, Guangdong Business University, Guangdong College of Pharmacy, Guangdong Ocean University, Guangdong University of Business Study, Guangzhou University of Chinese Medicine, Guangdong University of Technology, Guangdong Polytechnic Normal University, Guangdong University of Business Study, Guangdong University of Foreign Studies, Guangzhou University, Guilin University of Technology, Guilin University of Electronic Technology, Guiyang College of Traditional Chinese Medicine, Guizhou Institute of Nationalities, Guizhou Normal University, Guizhou University, Guizhou College of Finance and Economics,

Hainan Normal University, Hainan University, Hanshan Normal University, Hangzhou DianZi University, Harbin Engineering University, Harbin Normal University, Harbin University of Science and Technology, Hebei Agriculture University, Hebei Economic and Business University, Hebei Normal University, Hebei University of Science and Technology, Hebei University, Hefei University, Hefei University of Technology, Heilongjiang University, Henan Agricultural University, Henan Institute of Science and Technology, Henan Normal University, Henan College Of Science And Technology, Henan University of Finance and Economics, Henan University of Technology, Henan University, Hengyang Normal University, Hohai University, Hongshan Normal University, Huaqiao University, Huaqiao University in Fujian province, Huazhong University of Science and Technology, Huangshan University, Huaibei Coal Industry Teachers College, Huanggang Normal University, Huangshan College, Huazhong Agricultural University, Huazhong Normal University, Huangzhong Agricultural University, Huazhong Agricultural University, Huazhong University of Science and Technology, Hubei Coal Industrial Teacher's College, Hubei Changjiang University, Hubei National University, Hubei Normal University, Hubei University, Hubei University of Technology, Hunan Agriculture University, Hunan City University, Hunan Institute of Science and Technology, Hunan Normal University, Hunan University, Hunan University of Arts and Science, Hunan University of Science and Engineering, Hunan University of Science and Technology, Hunan University of Arts and Science, Hunan University of Chinese Medicine, Hunan University, Hunan University of Science and Technology, Hunan University

Inner Mongolia University, Inner Mongolia Normal University,

---

Jiaying University , Jiangxi Normal University, Jiangxi University of Finance and Economics, Jishou University, Jiangxi Agricultural University, Jiangxi Normal University, Jiangxi Science & Technology Normal University, Jiangsu University, Jiamusi University, Jiliang University, Jimei University, Jinan University, Jiujiang University, JYU University, Jiangnan University, Jiangxi Normal University, Jiangxi University of Finance and Economics, Jilin University, Jinggangshan University,

Kunming University of Science and Technology

Lanzhou Commercial College, Lanzhou University, Liaoning University, Lanzhou University, Leshan Normal University, Liaocheng University, Liaoning Normal University, Liaoningshihua University, Linyi Normal University, Linyi University Luoyang Normal University, Ludong University,

Mianyang Normal University, Minzu University of China

Nanchang University, Nanchang Hang Kong University, Nanjing Agricultural University, , Nanjing Agricultural University, Nanjing Audit University, Nanjing Normal University, Nanjing University, Nanjing University of Aeronautics and Astronautics, Nanjing University of Finance & Economics, Nankai University, Neijiang Teachers' College, Northeast Agriculture University, Northeast Forest University, Northeast Normal University, Northeastern University, North University of China, North West Normal University, Northwest University, Northwest University of Politics and Law, Northwest A & F University, Naval Aeronautical Engineering Academy Qingdao Branch, Nanyang Institute College, Nanyang Normal University, NorthEast Normal University, North China Electric Power University, Northeastern University, Northwest University, Northwest Polytechnic University, Normal University, Northeast University, Northeast Normal University, Northwest A&F University, Northwest Nationalities University, Northwest Sci-Tech University of Agriculture and Forestry, Northwest University, Northwest University for Nationalities,

Ocean University of China,

Peking University, People's University of China, Pingdingshan University

Qingdao Agricultural University, Qingdao Technological University, Qingdao University, Qinghai University, Quanzhou Normal University, Qufu Normal University, Qiannan Normal College for Nationalities

Renmin University,

Shandong Agricultural University, Shandong University of Technology, Shandong University of Science and Technology, Shandong Economic University, Shandong Institute of Business and Technology, Shandong Institute of Light Industry, Shandong Jianzhu University, Shandong Liaocheng University, Shandong Normal University, Shandong University, Shandong University, Shandong University, Shaoxing University, Shaoyang College, Shangqiu Normal University, Shanxi Agriculture University, Shanxi Datong University, Shaanxi Normal University, Shanxi North University of China, Shanxi University of Finance and Economics, Shanxi Normal University,

---

Shanxi University, Shenyang Agricultural University, Shenyang Pharmaceutical University, Shenzhen University, Shijiazhuang University Of Economics, Sichuan Agricultural University, Sichuan International Studies University, Sichuan Normal University, Sichuan University, Sijiazhuang Railway College, South China Agriculture University, South China Normal University, South China University of Technology, South China University, Southwest JiaoTong University, Southwest Finance University, Southwest University, Southwest University of Finance and Economics, South China University of Technology, South Central University for Nationalities, South China Agriculture University, South China Normal University, South China University of Technology, Southeast University, Southwest Forestry College, Southwest Jiaotong University, Southwest Normal University, Southwest University for Nationalities, Southwest University of Science and Technology, Southern Medical University, Southwest University, Southwest University of Finance and Economics, Southwest University of Political Science and Law, Sun Yat-sen University,

Taiyuan Normal University, The Chinese University of Hong Kong, Three Gorges University, Tianjin University of Technology, Tianjin Normal University, Tangshan Normal University, Tianjin Foreign Study University, Tianjin Normal University, Tianjin University of Science and Technology, Tsinghua University,

University of Science and Technology of China, University of Electronic Science and Technology of China, University of Jinan , University of South China, University of Science and Technology Beijing,

Weifang Medical College, Weinan Normal University, Wenzhou University, Wuhan Institute of Technology, Wuhan University of Technology, Wuhan Polytechnic University, Wuhan University

Xiamen University, Xian Economic and Financial College, Xian Institute of Technology, Xi'an International Studies University, Xi'an University of Electronic Science and Technology , Xian Jiaotong University, Xi'an Post and Telecommunication, Xian University of Finance and Economics, XiangTan University, Xiamen University, Xiangnan University, Xiangtan University, Xidian University, Xinjiang University, Xinyang Agriculktural College, Xinyang Normal University, Xinyang Vocational College, Xinzhou Teachers University, Xidian University, Xinjiang University, Xuchang University

Yang An University, YanShan University, Yantai University, Yangcheng Normal University, Yantai University, Yantai Normal University, Yangtzeu University, Yuxi Normal University, Yulin Normal University, Yunnan Normal University, Yunnan University

Zhangan Economy and Law School, Zhanjiang Normal University, Zhengzhou University, Zhejiang University, Zhejiang University of Technology, Zhongnan University of Economics and Law, Zhangzhou University, Zhangzhou Normal University, Zhejiang Chinese Medical University, Zhejiang Forestry University, Zhengzhou Normal University, Zhengzhou Institute of Aeronautical Industry Management, ,Zhengzhou University, Zhejiang Gongshang University, Zhejiang University of Finance and Economics Zhongnan University of Economics and Law, Zhongyuan University of Technology, Zhoukou Normal University, Zunyi Normal College, Zunyi Medical College

---

# **THE STUDENTS HAVE SPOKEN BUT IS ANYONE LISTENING?**

**Chinese teachers, teaching English as a foreign language, to Chinese students, in Chinese, in China; supplemented by young and inexperienced foreign white monkeys who play the guitar and teach songs and games, while experienced native English teachers over 60 years of age are routinely rejected by National policy; all for the purpose of passing National examinations of dubious value;**

# **DEMANDS ANOTHER REVOLUTION**